

# **FX AccuCharts**

## How to access via GTS Web

---

### **Abstract**

This paper describes how to login to FX AccuCharts while using the GTS Web platform.

## Revision History

<b>Date</b>	<b>Version</b>	<b>Description</b>	<b>Author</b>
1/24/2008	1.0	Initial version	Dean Pollaro

## Introduction

This document can be used to access FX AccuCharts if you use the GTS Web platform. Use this document if you have difficulty loading FX AccuCharts when using the GTS Web platform.

## Client Procedures

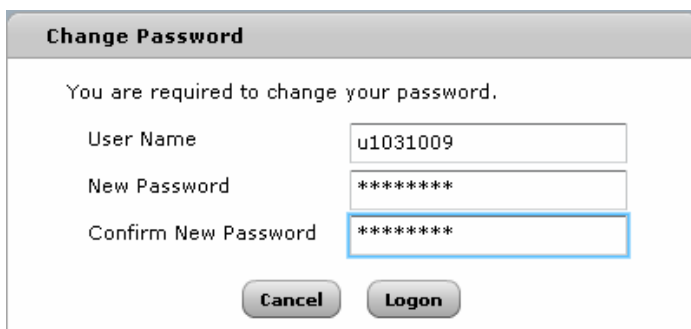
1. Login to the GTS Web. Type your username and password using *lowercase (small) letters* and then click “Log On”.



The screenshot shows the 'GTS Web Trader' login interface. At the top, there is a header with the 'FX Solutions' logo and the text 'GLOBAL TRADING SYSTEM'. Below the header, the main heading is 'Enter your system credentials'. The form includes a 'User Name' field with the value 'u1031009', a 'Password' field with asterisks, a 'Change Password' checkbox, and a 'Language' dropdown menu set to 'English'. A 'LOG ON' button is positioned below the fields, and a link for 'Forgot User Name/Password?' is at the bottom.

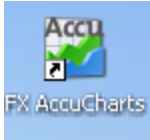
If you are logging into your account for the first time, you will be required to change your password.

*(Please note that your new password must be at least 8 characters long and contain one alpha and one numeric character)*



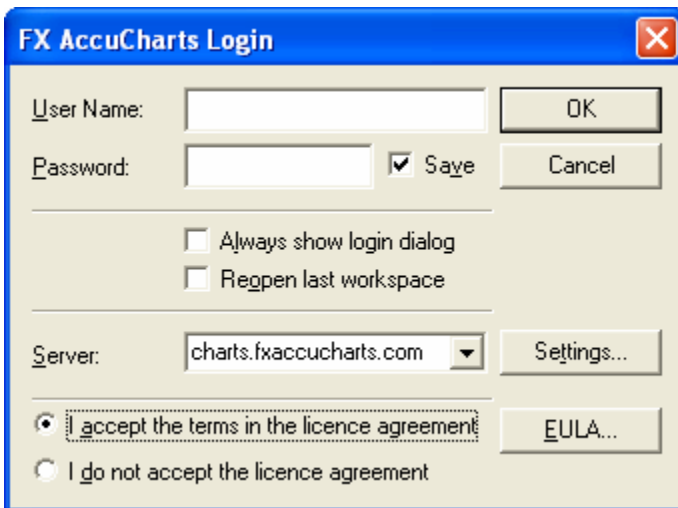
The screenshot shows a 'Change Password' dialog box. It contains the text 'You are required to change your password.' followed by three input fields: 'User Name' (u1031009), 'New Password' (asterisks), and 'Confirm New Password' (asterisks). At the bottom, there are 'Cancel' and 'Logon' buttons.

2. Once logged in to the GTS Web platform, go to your desktop and double click the FX AccuCharts icon.

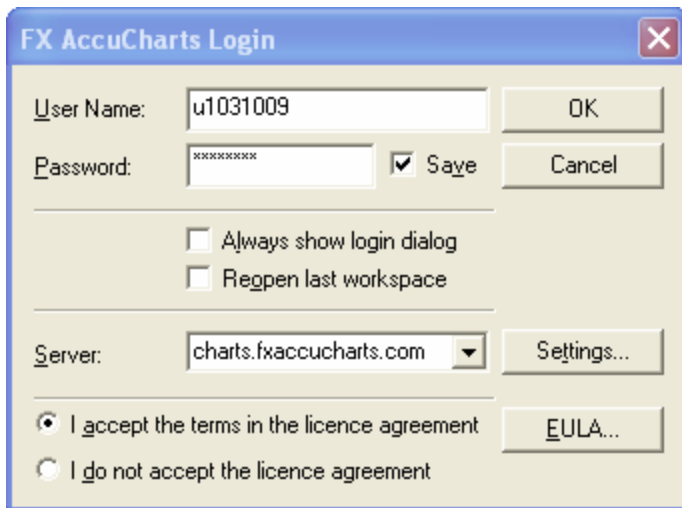


To download FX AccuCharts, go to <http://www.fxsol.com/download>

3. Select “I accept the terms in the license agreement at the bottom of the login window.”



4. Type your username and password in *lowercase (small) letters* and click OK to login.



5. You will now be logged in. Click on Tutorials at the lower left to learn how to use FX AccuCharts.

